

# Breast Cancer Incidence and Mortality in Georgia, 2002-2006

Presentation to  
2009 Georgia Cancer Research Symposium  
November 6, 2009



Rana Bayakly, Director, Georgia Comprehensive Cancer Registry



GEORGIA DEPARTMENT OF  
COMMUNITY HEALTH

# DCH Mission

## ACCESS



Access  
to affordable,  
quality health  
care in our  
communities

## RESPONSIBLE



Responsible  
health planning  
and use of  
health care  
resources

## HEALTHY



Healthy  
behaviors and  
improved  
health  
outcomes



# DCH Initiatives

## FY 2009 and FY 2010

### FY 2009

- Medicaid Transformation**
- Health Care Consumerism**
- Financial & Program Integrity**
- Health Improvement**
- Solutions for the Uninsured**
- Workforce Development**
- PeachCare for Kids™ Program Stability**
- Customer Service**

### FY 2010

- Medicaid Transformation**
- Health Care Consumerism**
- Financial & Program Integrity**
- Health Improvement**
- Workforce Development**
- Customer Service**
- Emergency Preparedness**

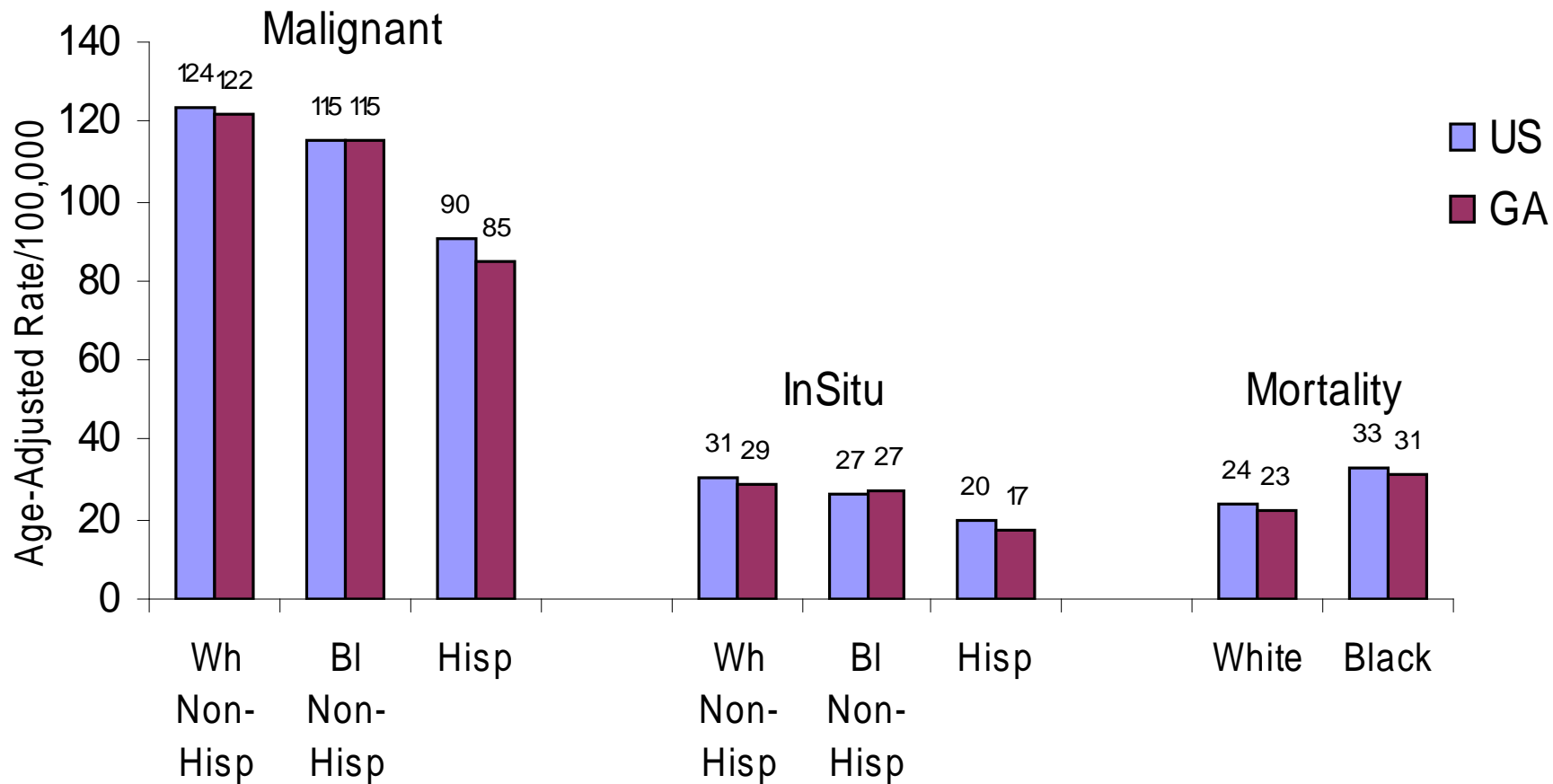


# Breast Cancer--Data

- Breast Cancer Leading Cause of Cancer Incidence Among Women
  - 5,300 malignant cases diagnosed yearly
    - Age Adjusted rate 118.5/100,000
    - GA rate is lower than US rate 122/100,000
  - 1,250 In-situ cases diagnosed yearly
    - Age-Adjusted Rate 27.7/100,000
    - GA rate is lower than the US rate 29.3/100,000
- Breast Second Leading Cause of Cancer Death Among Women
  - 1,100 female Georgian die yearly
    - Age Adjusted rate 24.3/100,000
    - GA rate is similar to US rate 24.5/100,000



# Breast Cancer by Race/Ethnicity, 2002-2006



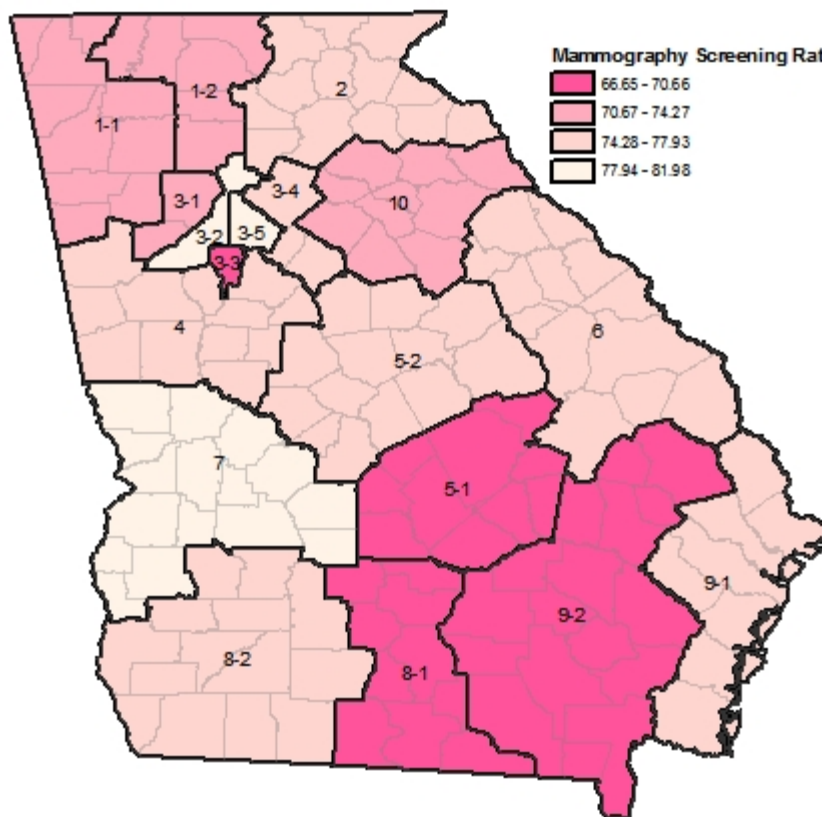
# Breast Cancer--Data

- GA participate in the National Breast and Cervical Cancer Early Detection Program since 1990
  - Uninsured and Underinsured at 200% poverty level  
Age 40-64 (75% must be 50-64 years of age)
- GA State supplement federal money for the Breast and Cervical Cancer screening
- State and Federal combine covers about 15% of the eligible population in GA.
- In addition to screening GA has implemented the Women Health Medicaid Program to provide treatment dollars for women who are diagnosed with breast and cervical cancer through the BCCP since 2001.



# Mammography Screening

- 76% of Women 40 years and older Receives Mammogram screening in GA.  
(2010 Obj 70%)
- GA screening prevalence is similar to the US prevalence of 76.5%.
- Mammography Screening differ by health district it range from as low as 66.7% in SE GA up to 82% in Dekalb



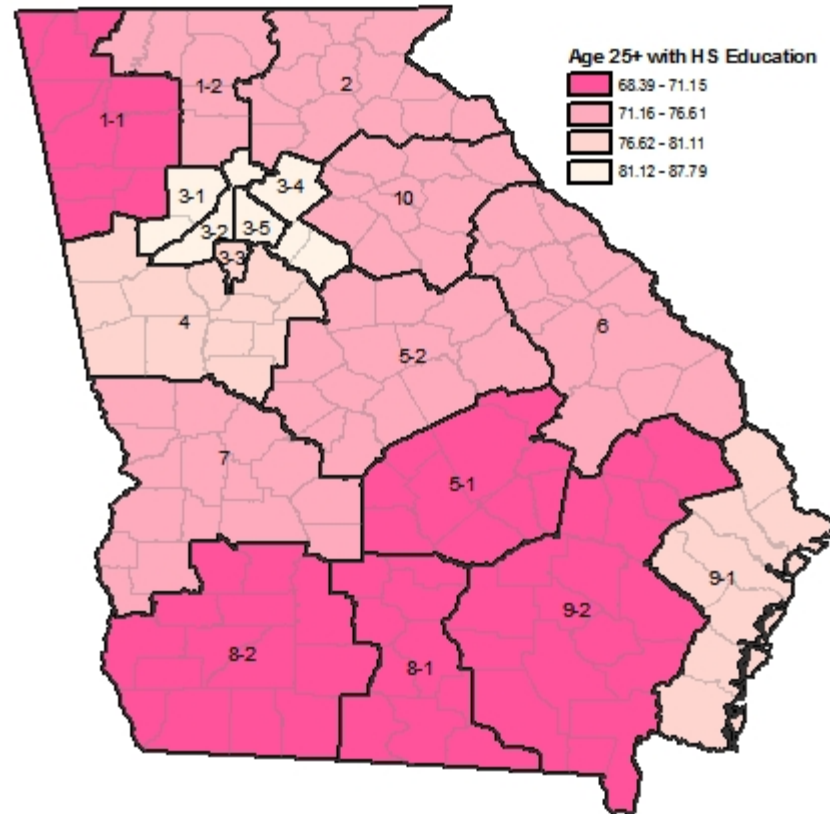
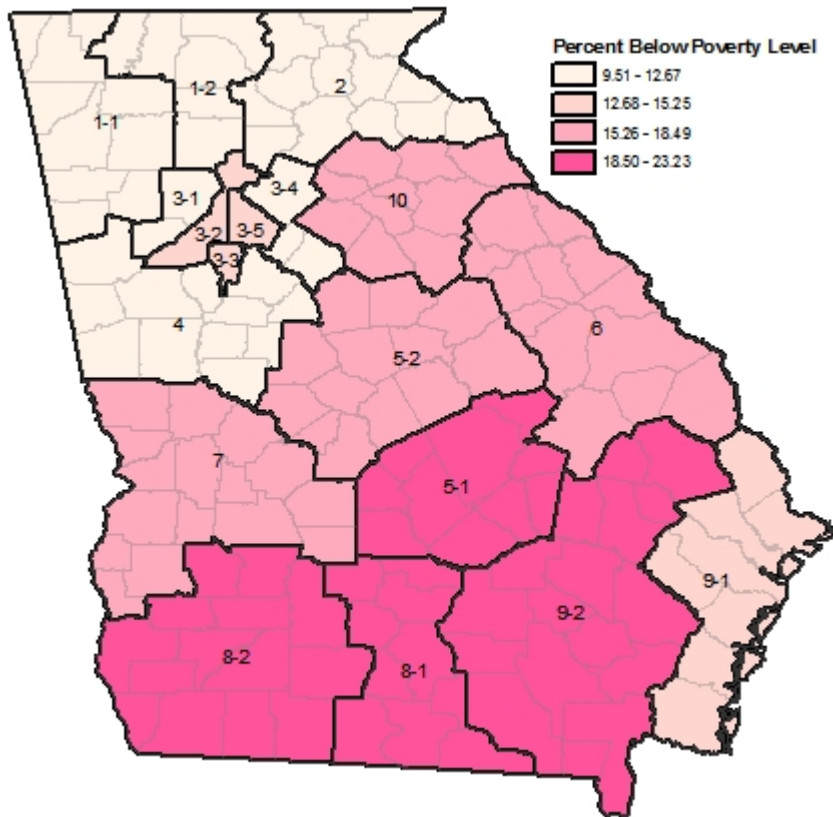
Georgia Behavioral Risk Factor Surveillance System (GABRFSS)

# Enhancing Early Detection Strategy

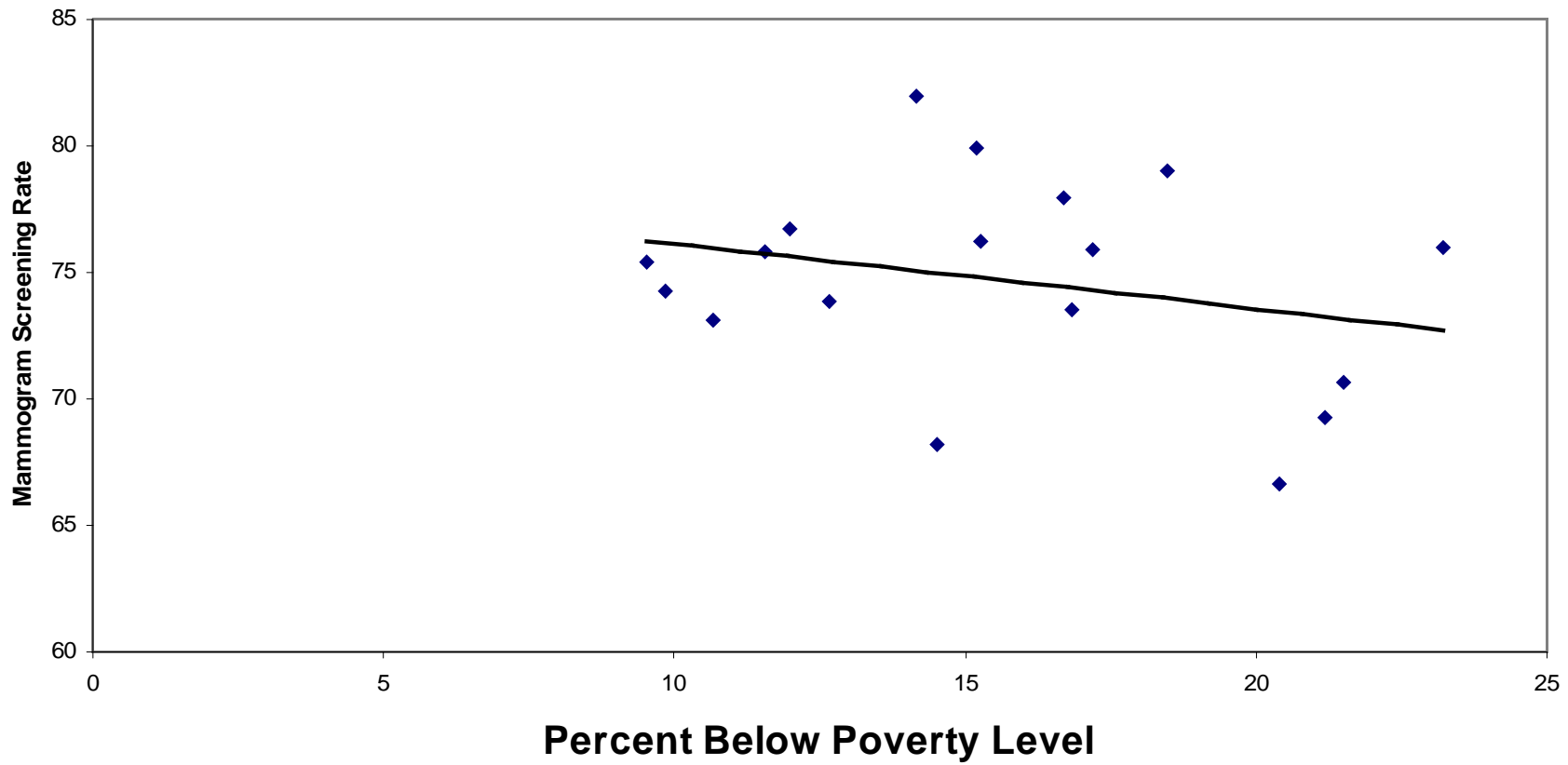
- Poverty
- Educational level
- Screening
- Incidence
- Mortality



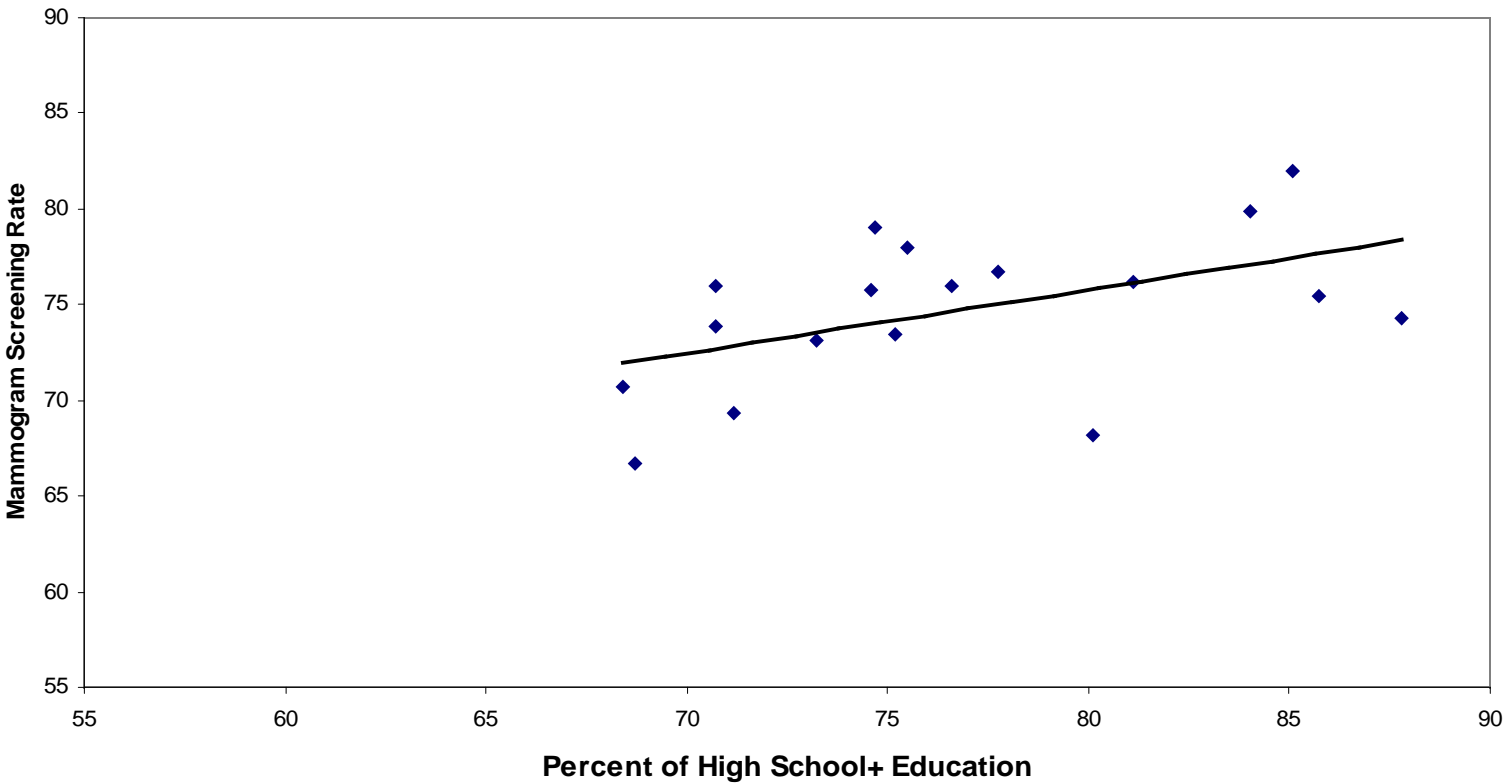
# Poverty and Education Level



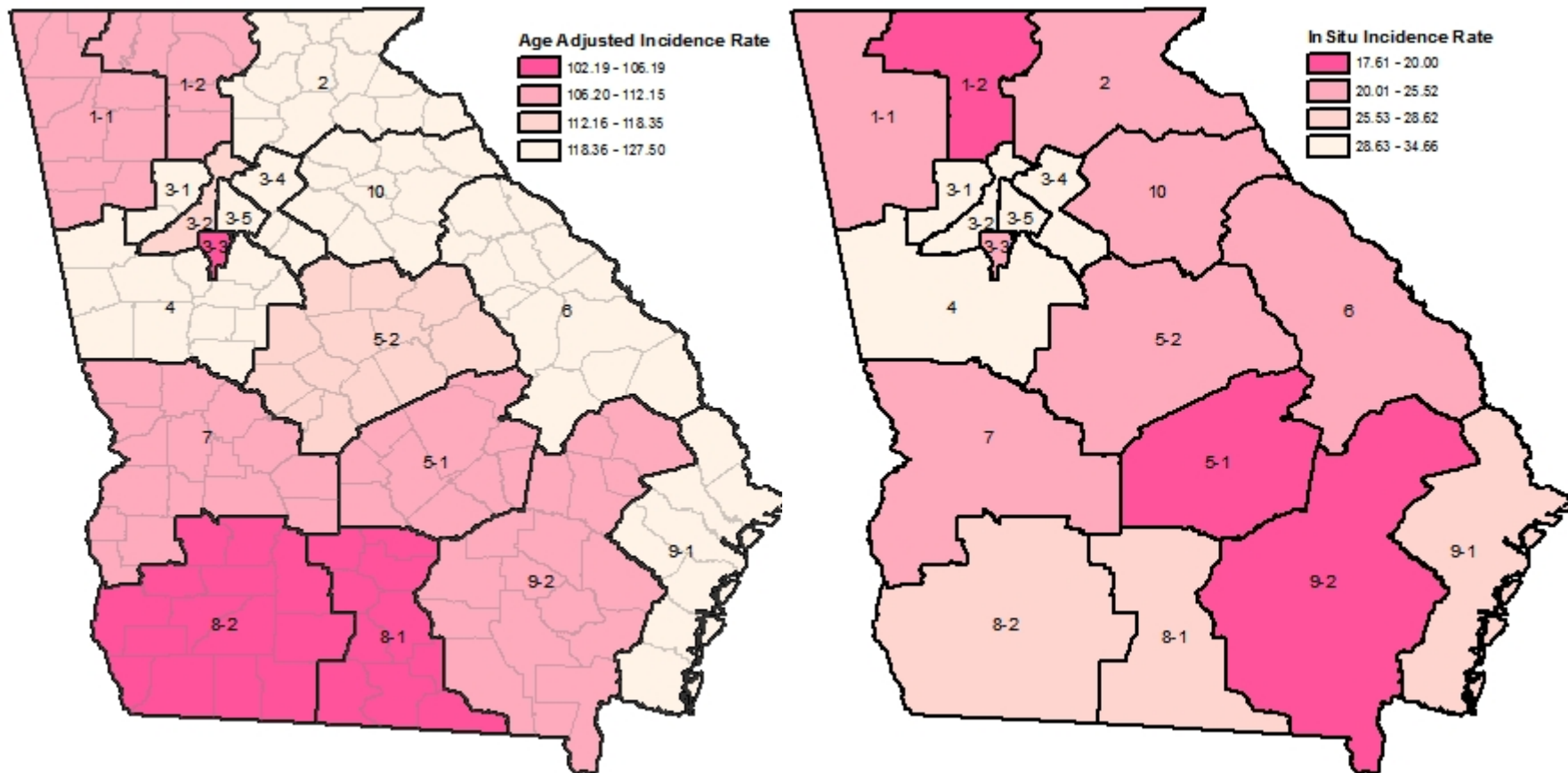
# Mammography Screening vs Poverty Level by Health District



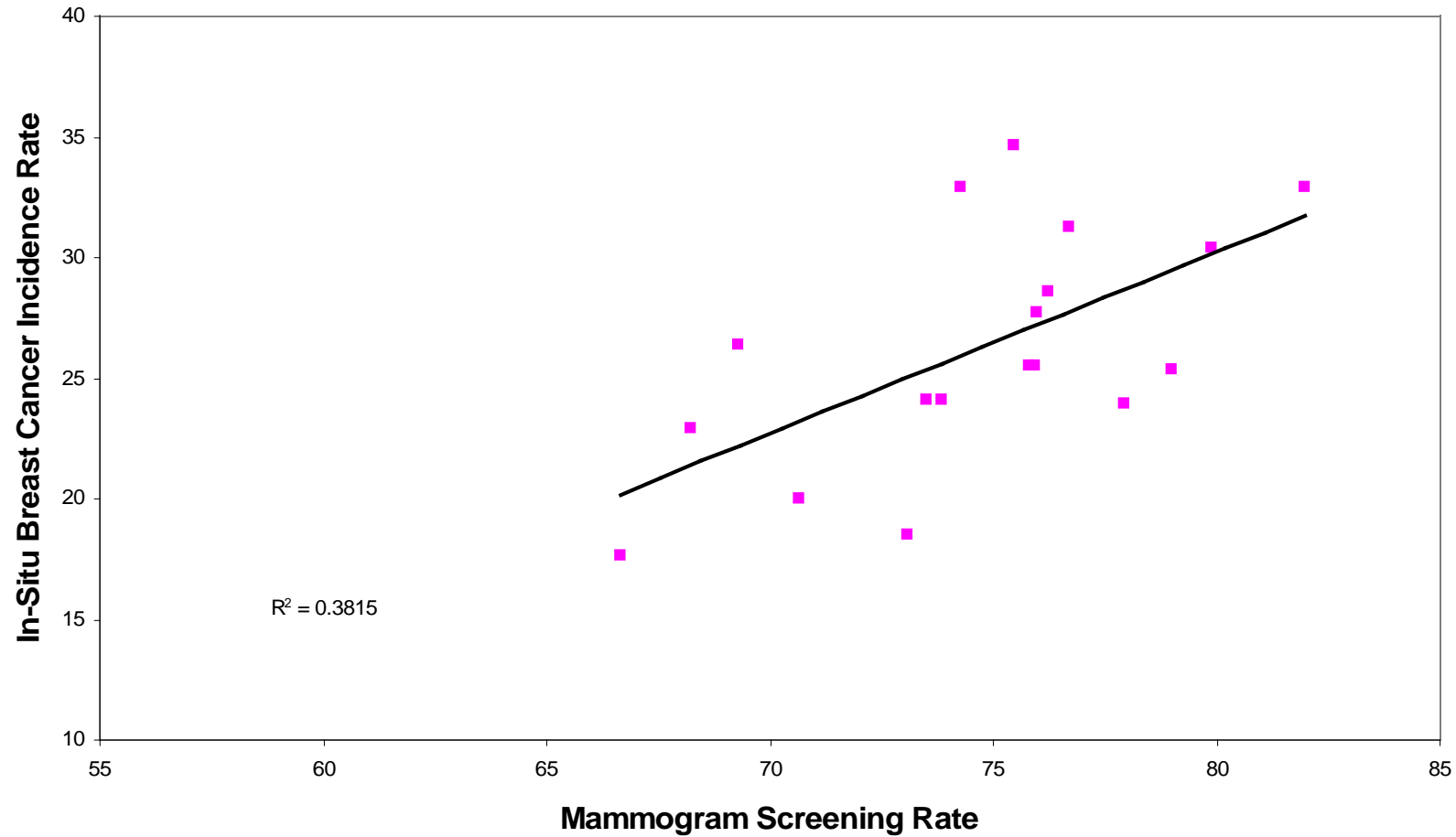
# Education Level vs Mammography Screening by Health Districts

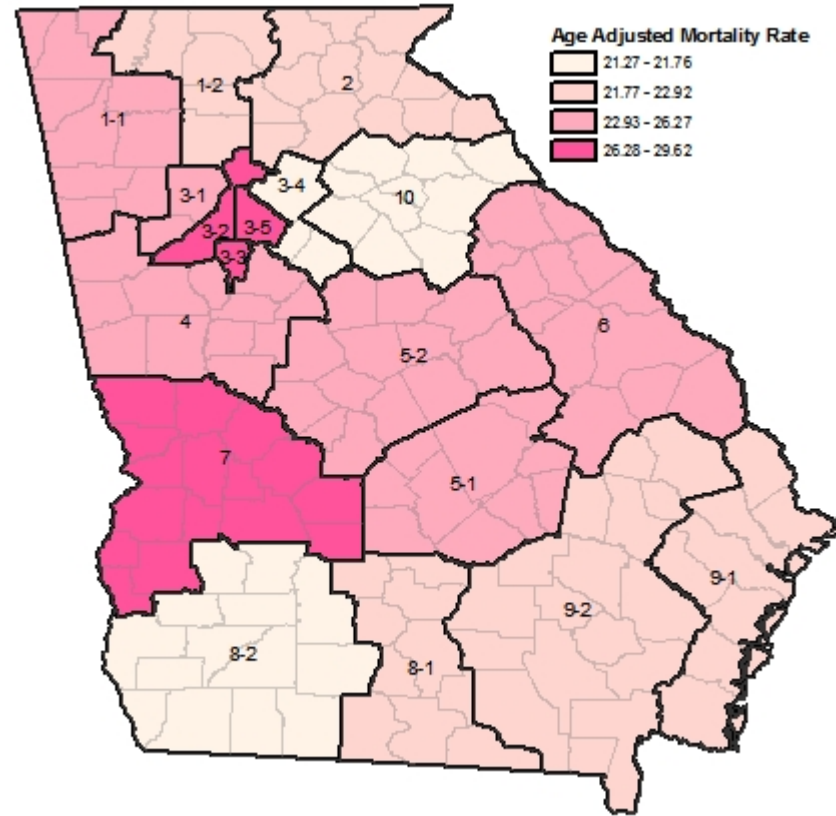
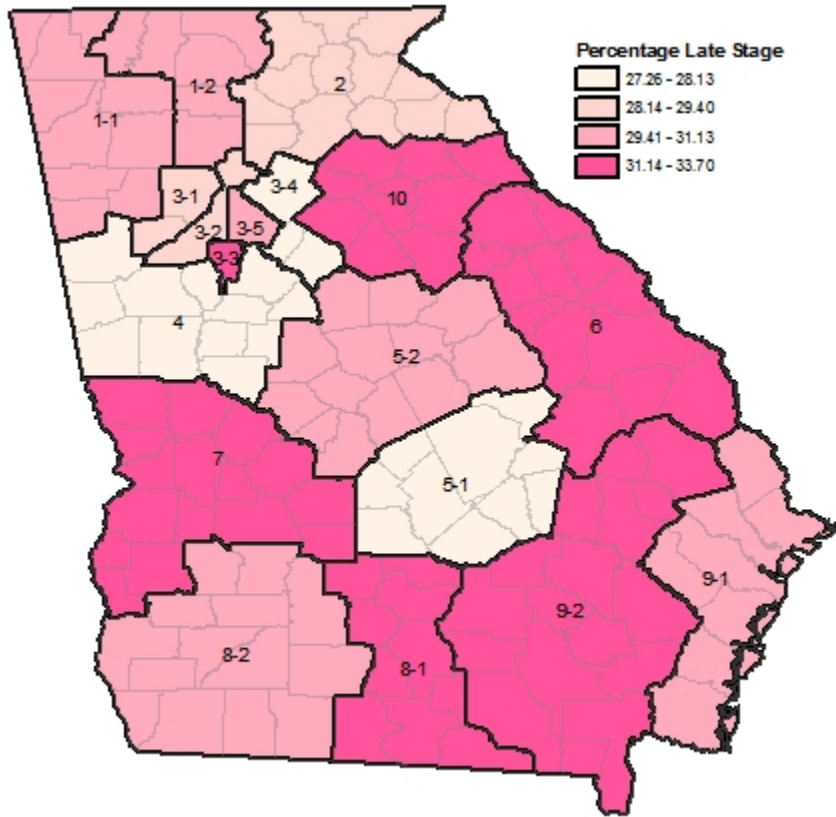


# Breast Cancer Incidence

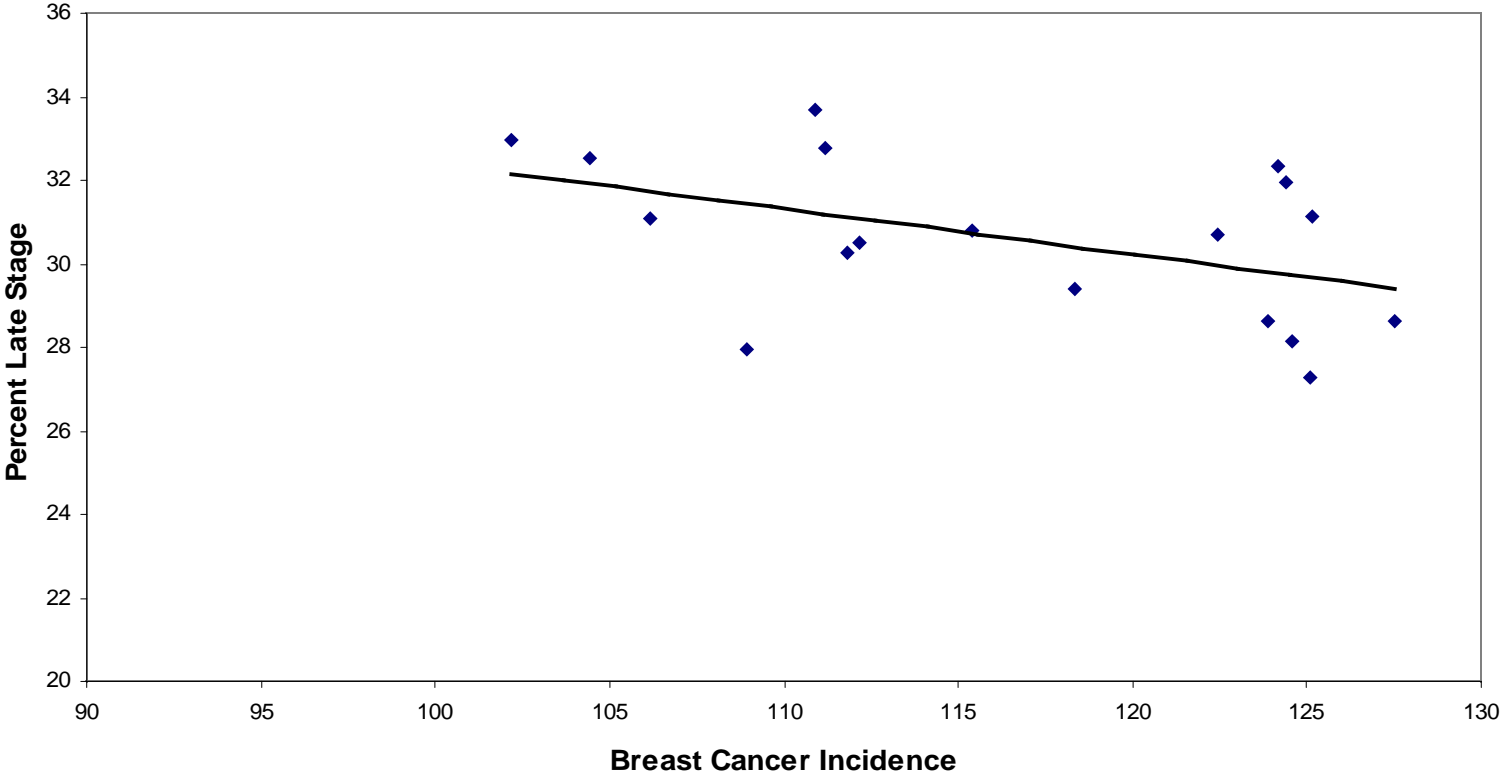


# Mammography Screening vs In Situ Breast Cancer by Health Districts





# Late Stage Breast Cancer vs Breast Cancer Incidence Rate by Health Districts



# Targeting Priority Areas

