

April 2009

www.georgiacancer.org

IN THIS ISSUE

[BRAG Onc Participants](#)

[NCI Focus on
Biorepositories](#)

[Accrual Summary](#)

PROFILE



Judith Giri, PhD
Director, BRAG Onc

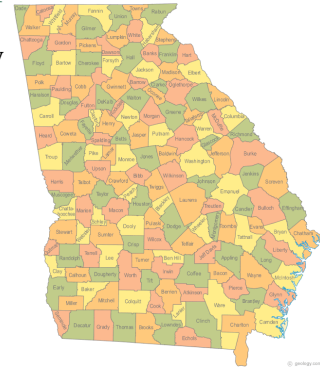
Assistant Professor, Pathology

Member,
MCG Cancer Center

Cell & Molecular Biologist

BRAG Onc State Participants

The following organizations are currently participating in BRAG Onc by providing samples and data for use by cancer investigators throughout the state.



EAST

Coordinating Center

Medical College of Georgia, *Augusta*

WEST CENTRAL

John B. Amos Cancer Center at Columbus Regional Medical Center, *Columbus*

METRO ATLANTA

Dekalb Medical, *Decatur*

Piedmont Hospital, *Atlanta*

St. Joseph's Hospital, *Atlanta (future site)*

NORTHWEST

Hamilton Medical Center, *Dalton (NW hub)*

Redmond Medical Center, *Rome*

Floyd Medical Center, *Rome*

Gordon Hospital, *Calhoun*

Hutcheson Medical Center, *Fort Oglethorpe*

SOUTHWEST

Phoebe Medical Center, *Albany (SW hub)*

Archbold Medical Center, *Thomasville*

SOUTHEAST

Nancy N. and J.C. Lewis Cancer and Research Pavilion at St. Joseph's/Candler Health System, *Savannah*

Memorial Health System, *Savannah*

BA, Hunter College
City University, NY

PhD, Rutgers University
Microbiology

CONTACT

jgiri@mcg.edu

706- 721-5279

[Website Profile](#)

STAFF

[Judith Giri, PhD Director](#)

[Kathy Russell, GCC Clinical
& Research Program Advisor](#)

[Amy Moore, PhD Manager,
GCC Research Programs](#)

[Judy Stanton, Editor](#)

NCI: Focus on Biorepositories

OBBR Office of Biorepositories
and Biospecimen Research

NCI has undertaken a multi-year process to define and deliver a new generation of quality evidence-based standards for biospecimens and biorepositories and established the new Office of Biorepositories and Biospecimen Research (OBBR). The goal of OBBR is to provide leadership in biobanking, with the aim of improving the quality of human biospecimens and biobanking operations nationally and internationally. The first guidelines for biorepositories from the NCI can be found at www.biospecimens.cancer.gov.



Dr. Judith Giri attended the NCI's 2nd Annual Biospecimen Research Network (BRN) Symposium in Bethesda, MD in March. "Advancing Cancer Research Through Biospecimen Science" focused on the impact of pre-analytical biospecimen variables on cancer research and molecular medicine.



BioBanking: A National Priority

A special Annual Issue of Time Magazine included "BioBanks" as one of 10 ideas changing the word.

[Click here to read the article.](#)



Annual Meeting

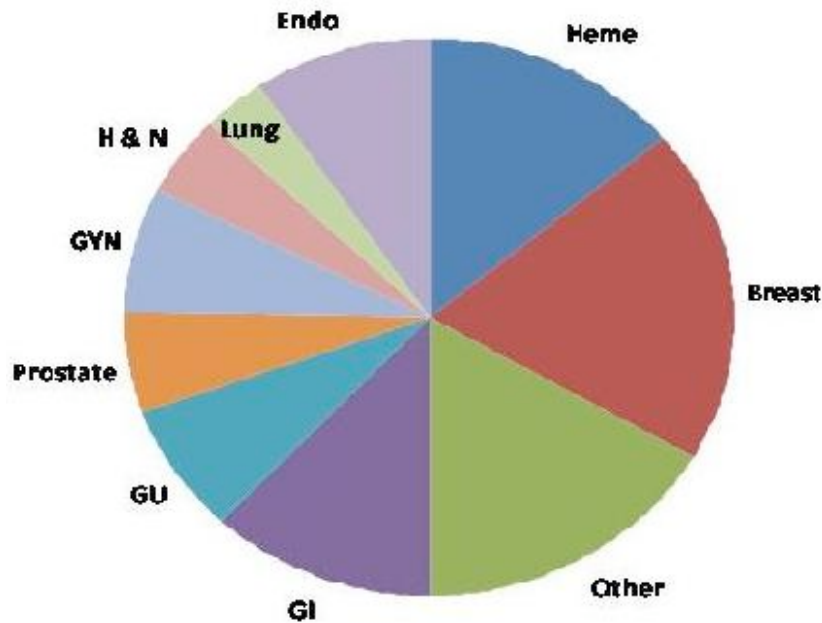
The International Society for Biological and Environmental Repositories (ISBER) has a large interest group focusing on human biobanks. Its international membership shares experiences to improve all functions of biorepositories.

ISBER's May meeting in Portland, Oregon, is entitled "Celebrating a Decade of Growth in International Biorepository Excellence." Dr. Giri will make a presentation on BRAG Onc at this meeting. For information on ISBER, go to www.isber.org.

Steering Committee To Set

Standard Protocols & Policies

BRAG Onc's Steering Committee will meet this Spring in Atlanta to adopt uniform protocols for BRAG-Onc and formulate policies for access and distribution of specimens to Georgia investigators. The goal is to have these finalized and approved by Fall, 2009. Please contact Dr. Giri for further details: jgiri@mcg.edu



BRAG Onc is a TUMOR & TISSUE BANK for the state established in 2002 by the Georgia Cancer Coalition to support Cancer Research in Georgia

[Return to Top](#)

BRAG-Onc Accrual Summary

Thanks to participating facilities, BRAG-Onc now has samples representing more than 2800 cancer patients in the state. MCG contributed 2093 specimens from donors, including a Bone Marrow Repository with samples from 388 patients.

Type of Specimens in BRAG Onc

All specimens are obtained with ethical consent; when feasible, matched samples of tissue and blood are obtained from the same donor.

Blood: serum, plasma and buffy coats

Tissue: tumor and adjacent "normal;" fast frozen (in LN) and

fixed (Molecular friendly alcohol based and standard formalin)

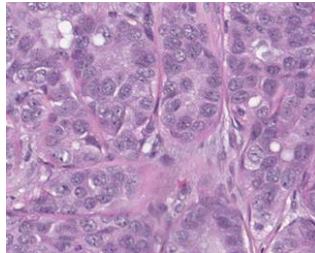
Other biofluids on demand: saliva, urine, ascitic fluid

Cells: MNC from bone marrow and PB; collaborations for cell preservation (such as ovarian tumor cells from ascitic fluid)

Other services: DNA preparation, Tissue Microarrays

QUALITY CONTROL FOR TISSUE

A representative section of tissue stored in the repository is reviewed by a Pathologist to ensure that the quality is appropriate for use in research.



A digital image is captured in the Aperio system.



*Mobilizing Georgia.
Immobilizing Cancer.*

The Georgia Cancer Coalition is an independent, not-for-profit organization that unites government agencies, academic institutions, civic groups, corporations and health care organizations in a concerted effort to strengthen cancer prevention, research and treatment in Georgia, with the ultimate goal of making Georgia one of the nation's premier states for cancer care. Our mission is to reduce the number of cancer-related deaths in Georgia. For information, go to www.georgiacancer.org.

Copyright ©2008 Georgia Cancer Coalition
50 Hurt Plaza, Suite 700, Atlanta, GA 30303 | 404-584-7720